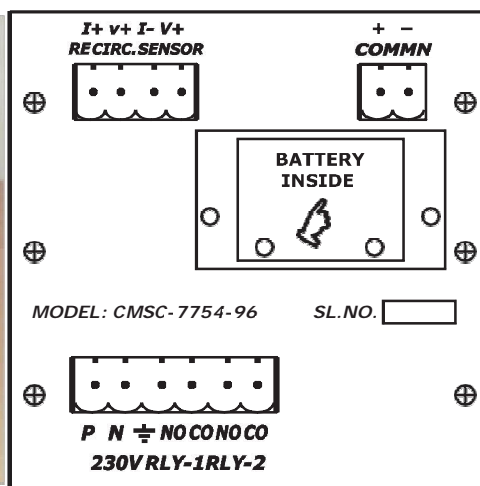


## FRONT PANEL



## REAR PANEL



MODEL CMSC-7754 is a comprehensive Recirculation pump controller to work in conjunction with solar thermal heating systems. The unit has an ON LINE Rechargeable Ni-Cad battery backed Real Time Clock (RTC).

The Recirculation pump controller ensures that the water at the receiving point of the delivery pipe, where the temperature sensor is fixed, RECIRCULATES the water, back to the tank by switching ON the Recirculation pump, till the temperature reaches the desired value, at delivery point.

This stand alone unit controls the recirculation pump during the Customer selectable, TWENTY FOUR TIME ZONES.

CMSC-7754 has TWO relays, one each for two recirculation pumps. These two 7 Amp Relays are designated as MOTOR1 & MOTOR2. These Relays can be used to switch ON an EXTERNAL CONTACTOR to operate the PUMPS.

Motor1 & motor2 can be programmed to function either in sequence with Programmable time gap between the two, or to operate only as either MOTOR1 or MOTOR2, through AUTO/MANUAL facility.

The unit has a 128X128DOTS LCD display with backlight with appropriate size of varying FONTS for different parameters.

The clear terminologies of various parameters provides a very USER FRIENDLY INTERFACE, making the PROGRAMMING of the parameters easy. The PC Communication is through RS 485 - MODBUS STANDARD.



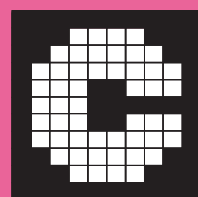
### CENTURY METERING SYSTEMS & CONTROLS

# 34 1B, 1st Floor, 4th Main,  
3rd Phase, Peenya Industrial Area,  
Bangalore - 560 058 - INDIA

PHONE: 080-28371316

E-Mail [century.metering@gmail.com](mailto:century.metering@gmail.com)

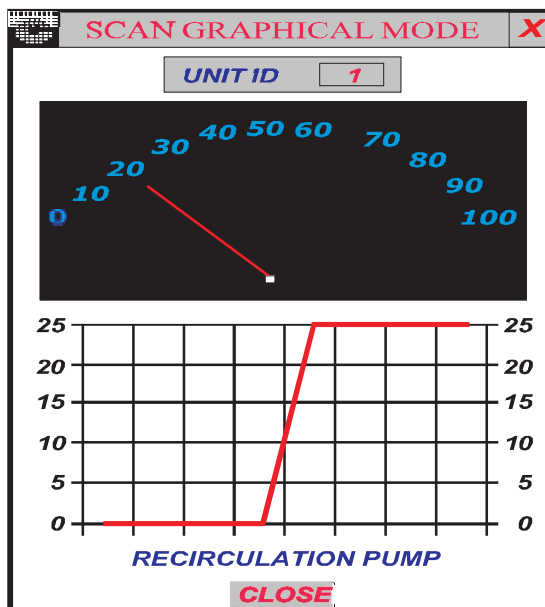
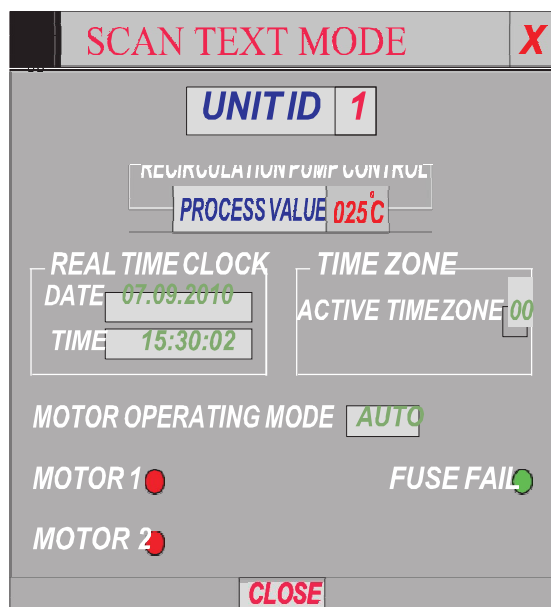
Website : [www.centurymetering.com](http://www.centurymetering.com)



**CMSC-7754**

RECIRCULATION PUMP CONTROLLER

## PC USER INTERFACE SCREEN SHOTS



### SPECIFICATIONS

Sensor	:	TWO numbers of 4 wire RTD Sensors
Temperature Range	:	0 to 100 deg centigrade.
Accuracy	:	Better than one deg centigrade
Number of displays	:	128 X 128 DOTS LCD DISPLAY with BACKLIGHT, with appropriate size of varying FONTS for different parameters.

#### Programmable Parameters :

<b>Recirculation Pump Controller</b> * Set Value - RPC SV - 15°C to 80°C		* Hysterisis- RPC HYS - 1 °C to 10 °C
<b>Real Time Clock</b> * Hour - SET HR - 0 to 24 * Min - SET MIN - 0 to 59	<b>Time Zones (6)</b> * Enable / Disable * Start Time Hour - HR - 0 to 24 * Start time Min - MIN - 0 to 59 * Duration - DUR - 1 to 1439 mts	
* AUTO - Auto Motor1- M1 - Auto Motor2- M2 - Auto Cyclic with Cyclic Time CYC TIM - 1 to 1439 mts	<b>Motor Selection</b> * Manual - Manual Motor 1 – M1 - Manual Motor 2 – M2	

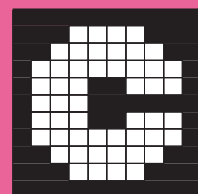
Number of Relays	:	ONE for MOTOR1, ONE for MOTOR2
Relay Rating	:	Two, 7A rating, for MOTORS 1&2
Programming Keys	:	TOUCH SENSITIVE, Four Keys ( Increment, Decrement, Enter, Scroll )
PC Communication	:	RS485 – MODBUS STANDARD
Rear panel Terminations	:	All terminations are on Phoenix Plug in connectors as seen in drawing.
Dimension	:	96mm X 96mm X 115MM
Type of mounting	:	PANEL Mounting [Cutout 92mm X 92mm]
Power input	:	230V AC +/- 15%, 50Hz, less than 5 VA



### CENTURY METERING SYSTEMS & CONTROLS

# 34 1B, 1st Floor, 4th Main,  
3rd Phase, Peenya Industrial Area,  
Bangalore - 560 058 - INDIA

PHONE: 080-28371316  
E-Mail century.metering@gmail.com  
Website : www.centurymetering.com



CMSC-7754

RECIRCULATION PUMP CONTROLLER